

**RADIANT**  
DOORS AND FRAMES

**PRODUCT  
CATALOGUE**

**RADIANT**

About Radiant Doors and Frames	3
Selecting the Right Door	5
Lightweight Solid Core & Solid Core Doors	6
Acoustic Doors	7
Fire-Rated & Lead Lined Doors	8
Metal Lined and Clad doors	9
Steel Frames	10
Door Hardware	12
Projects	14
Contact	15



# Welcome to Radiant Doors and Frames

## TRUSTED AUSTRALIAN DOOR & FRAME MANUFACTURER

Radiant Enterprise, operating since 1998 and under new ownership since 2023, is a proudly Australian-owned and family run manufacturer, supplier and installer of doors and door frames. As a long-standing door frame and door supplier in Sydney, we've built a reputation for quality, innovation, and customer service.

## OUR MISSION AND VISION

At Radiant Enterprise, our vision is to lead the industry in innovative door and frame solutions, setting the benchmark for quality and customer satisfaction across Australia. Our mission is to deliver superior, Australian-made doors and frames through exceptional craftsmanship and dedicated service. We are committed to building enduring relationships with our clients by providing reliable, cutting-edge solutions and maintaining the highest standards of excellence in every project we undertake.

## OUR SERVICES

Our product range spans from metal door frames, timber solid core doors, lightweight engineered doors, and many specialised doors such as fire-rated, acoustic, KPA and lead-lined doors. All our non-rated doors comply with Australian Standard AS 2688, and our fire-rated doors comply with AS 1905. We also have a dedicated hardware technologies division that provides an extensive selection of architectural door hardware from leading manufacturers.



**DOORS**



## SELECTING THE RIGHT DOOR

Building Type and Opening location	Use level	Door Level				Door thickness (MM)	Special Requirements	Recommended door Type		
		1	2	3	4			LSC door	Solid core door	Fire-rated door
OFFICE BUILDINGS										
Entry doors	High			●		40/45	Vision		●	●
Individual office	Low	●				35/40	Privacy / Acoustic	●	●	
Toilet entry	High		●	●		35/40	Vision	●	●	
Stair wells	Moderate		●			45	Fire rating (FR)			●
Storerooms	Moderate		●		●	40/45	Metal clad / FR		●	●
Electrical cupboards	Moderate			●		35/40	Metal clad / FR		●	●
SCHOOLS, UNIVERSITIES, LIBRARIES										
Entry and exit	High			●		40/45	Vision		●	●
Classrooms	Moderate		●			35/40	Acoustic	●	●	
Toilet entry	High		●	●		35/40	Vision	●	●	
Canteens	High		●	●		35/40	Vision		●	
Stair wells	Moderate		●			45	FR			●
Secure store	Low				●	45	Metal clad / FR		●	●
HOSPITAL, NURSING HOMES										
Entry and exit	High			●		40/45	Vision		●	●
Patient rooms	Moderate		●			35/40	Privacy / Acoustic	●	●	
Stair wells	Moderate		●			35/45	FR			●
Operating rooms	High		●	●		35/40	Privacy / Acoustic	●	●	
Examination rooms	High		●	●		35/40	Privacy / Acoustic	●	●	
Kitchens	Moderate		●	●		35/40	Vision		●	
Canteens	High		●	●		35/40	Vision		●	
APARTMENTS, HOUSES										
Building entry	High			●		40/45	Vision		●	●
Apartment entry	High			●		45	FR			●
Bedrooms	Low	●				35		●	●	
Bathrooms	Low	●				35	Privacy	●	●	
Cupboards	Low	●				35		●	●	
Stair wells	High		●			45	FR			●
Electrical cupboards	Moderate			●		45	Metal clad / FR		●	●

## LIGHTWEIGHT SOLID CORE (LSC) DOORS



### Features

- ✓ 35mm or 40mm general purpose flush design, this is a moderate to high use door type, designed for heavy commercial / residential use.
- ✓ The Moisture Resistance (MR) core provides the door with structural strength and exceptional flatness.
- ✓ Internal edge rails to all four sides means no visible joins on the door faces.
- ✓ The tubular core reduces the weight from a standard solid HMR core door by 46%.
- ✓ Metal cladding for a light weight strong door.
- ✓ Facing option includes: MDF, PLY, Enduracote or Timber veneer.



## SOLID CORE DOORS



### Features

- ✓ 35mm, 40mm or 45mm general purpose flush design, this is a moderate to high use door type, designed for heavy commercial / residential use.
- ✓ Moisture Resistance (MR) core provides the door with structural strength and provides exceptional flatness.
- ✓ Internal edge rails to all four sides means no visible joins on the door faces.
- ✓ Metal cladding for an extra strong door.
- ✓ Vision panels of standard size.
- ✓ Facing option includes: Ply, EDC or Timber Veneer.





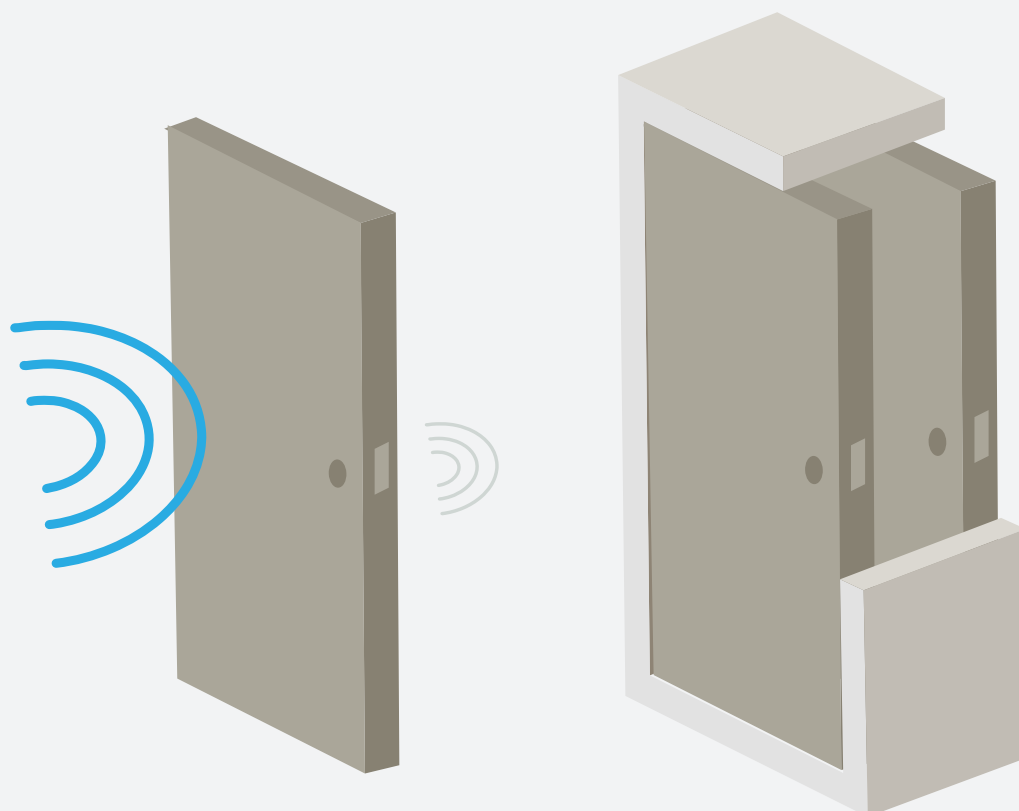
## ACOUSTIC DOORS

Non-rated & Fire-rated

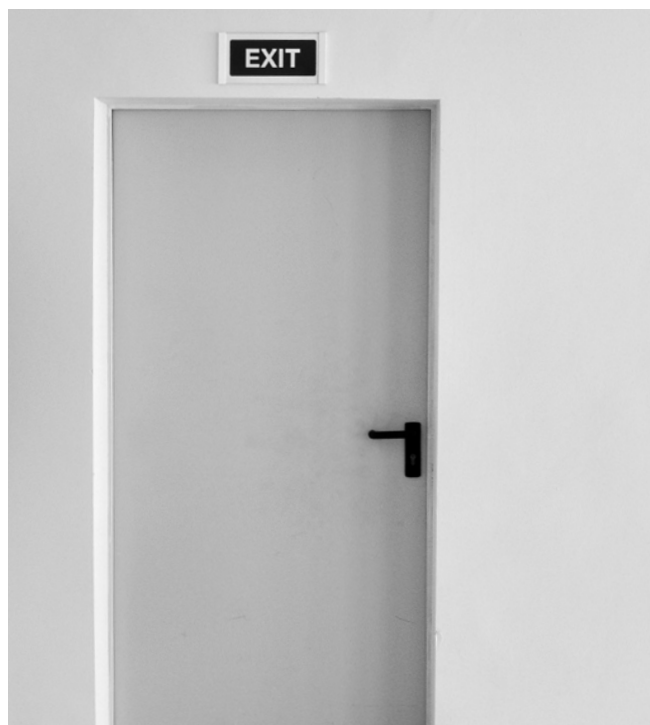
We manufacture both non-rated & fire-rated acoustic doors.

### RW Rating

Non-rated doors	35, 38, 40, 45 & 55
Fire-rated doors	32 – 38



## FIRE-RATED DOORS



### Features

- ✓ 35mm or 45mm general purpose flush design this is a moderate to high use door type, designed for heavy commercial / residential use.
- ✓ Fire rated core provides the door with structural strength and provides exceptional flatness. These cores are rated at 1 or 2 hour for both the 35mm and 45mm thick doors and 3 or 4 hours for the 45mm doors only.
- ✓ Internal edge rails to all four sides means no visible joins on the door faces.
- ✓ Metal cladding for an extra strong door.
- ✓ Fire-rated vision panels in standard sizes.
- ✓ Facing options includes:
  - MDF for 1 hr. fire rating
  - EDC for 1-2 hr. fire rating
  - Ply for 1-4 hr. fire rating
  - Timber veneer for 1-2 hr. fire rating

## LEAD-LINED DOORS



### Features

- ✓ Lead lined door can be either fire-rated or non-rated doors.
- ✓ Lead weighting can be provided in 5kgm<sup>2</sup>, 10kgm<sup>2</sup>, 15kgm<sup>2</sup>, 20kgm<sup>2</sup>, or 25kgm<sup>2</sup>.
- ✓ Internal edge rails to all four sides to conform with the Australian standards and means no visible joins on the door faces.
- ✓ Metal cladding for an extra strong door.
- ✓ Lead glass vision panels in standard size.
- ✓ Facing options includes: MDF, ply, enduracote or timber veneer.
  - Ply for 1-4 hr. fire rating
  - Timber veneer for 1-2 hr. fire rating





## METAL LINED AND CLAD DOORS

### Radiant Product Codes

#### **RMC1.**

Refers to a non-rated door with a 0.55mm metal sheet screw fixed to one face of the door only. This door is classed as a Non Combustible door.

#### **RMC2.**

Refers to all doors which then have metal sheets glued on both faces and is supplied with loose channel surrounds which are installed onsite by the door installer. The thickness of the metal will depend on the client's specifications.

#### **RMC3.**

Refers to a non-rated door and is called an envelope finished door which is cleated on the vertical edges and folded and silicone on the top and bottom. When you order this door you must order the frame and door in one go as the door is manufactured first and the frame is manufactured to suit the door. The thickness of the metal for this door is 0.7mm only.

#### **RMC4.**

Refers to a door similar to the RMC3. This door is stitched welded ground smooth, bogged and finished with primer giving the joints a smooth look. This door can be manufactured to metal thickness specified up to 2.9mm and the frame and door must be manufactured at the same time.

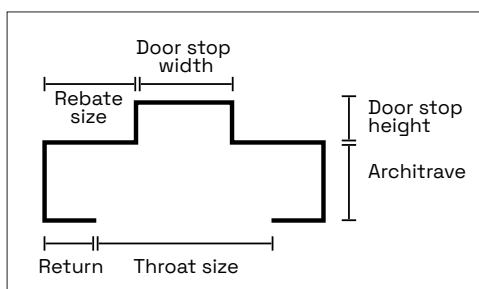




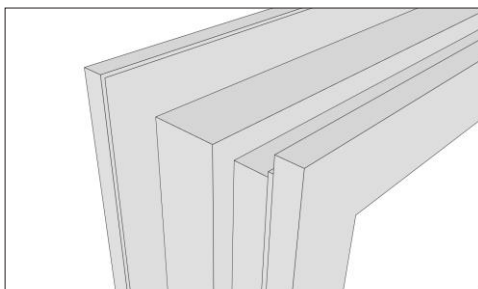
**FRAMES**

At Radiant, we specialise in the manufacturing of steel and stainless-steel frames, offering both fire-rated and non-rated options. Our frames are available with a variety of fixing methods to meet your specific needs.

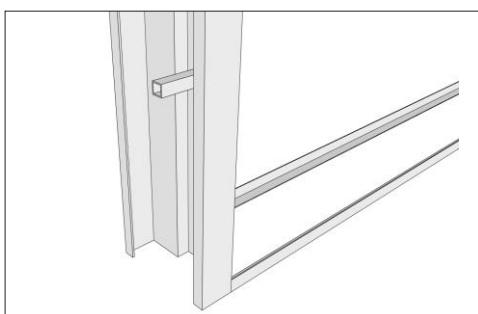
### DOOR FRAME PROFILE DETAILS



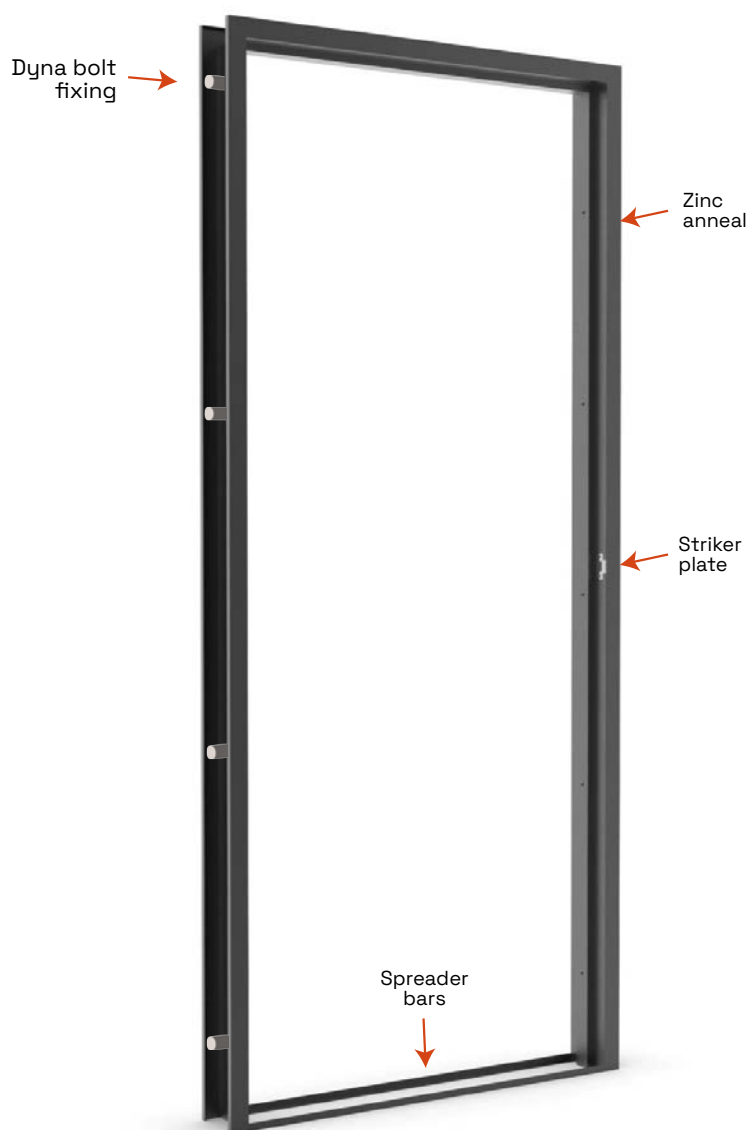
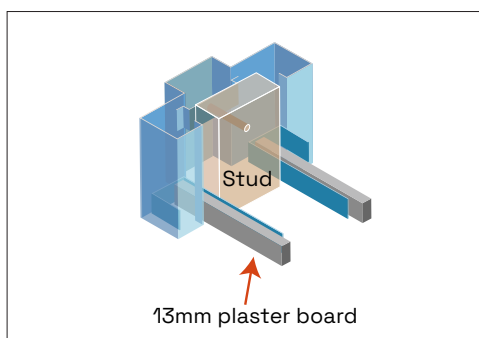
### CORNER DETAIL



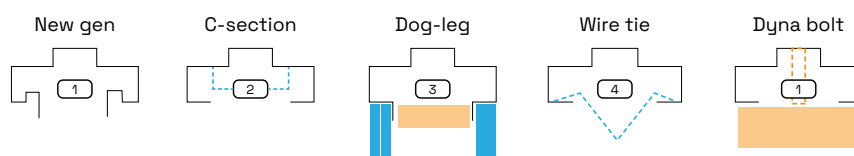
### DYNA BOLT FIXING



### WALL FIXING



### PROFILE FIXING METHOD





# DOOR HARDWARE





Radiant provides a wide array of hardware products and services for both non-rated and fire-rated applications.

**OUR TRUSTED HARDWARE SUPPLIERS INCLUDE:**





## PROJECTS



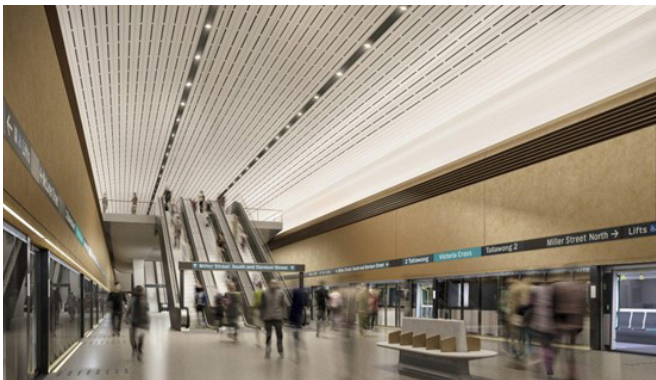
**423 FRAMES AND 612 DOORS**

Willowdale Residential Aged Care | Lipman



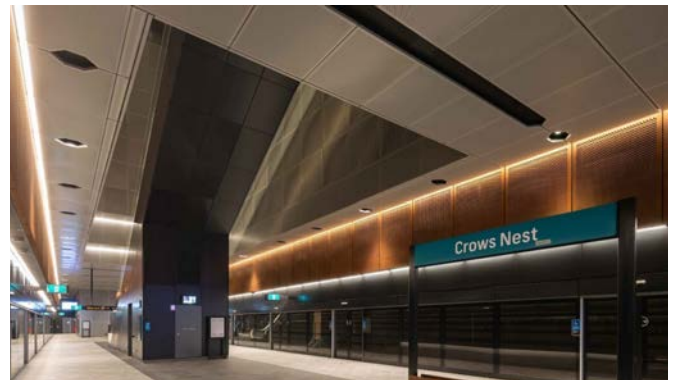
**398 FRAMES AND DOORS**

Waterloo Metro Station | John Holland



**553 FRAMES AND DOORS**

Victoria Cross Metro Station | Foxville



**398 FRAMES AND DOORS**

Crows Nest Metro Station | Interior Works



**112 FRAMES AND DOORS**

NEU Rose Bay | Impero Constructions



**233 FRAMES AND DOORS**

Hurlstone Agricultural High School |  
Stephen Edwards Constructions



## CONTACT INFORMATION

---



### COMPANY

Radiant Enterprise  
NSW Pty Ltd

### ADDRESS

1-3 Memorial Avenue,  
Ingleburn NSW 2565

### TELEPHONE

02 8796 4444

### SALES ENQUIRIES

[sales@radiantenterprise.com.au](mailto:sales@radiantenterprise.com.au)

